



follow us on facebook 

Large Clocks



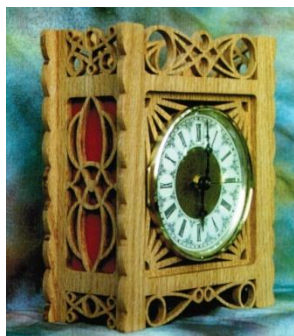
Blosser Clock (#WW-0002)

Size: 8" Wide x 4" Deep x 16" Tall

Movement: Quartz Movement & 5 1/8" Dia. Bezel

Description: Easy level mantel clock. Great for the beginner or veteran alike. Second WWW design and our all time best seller.

Price: \$10.00



Christopher Mantel Clock (#WW-0006)

Size: 8" Wide x 4" Deep x 9 1/2" Tall

Movement: Quartz Movement & 4 1/2" Dia. Bezel

Description: Easy Level Mantle Clock that is one of our original designs. This one was designed by Stephen Wilckens.

Price: \$7.00



Whispering Wind Vineyard Clock (#WW-0003)

Size: 12" Wide x 3 1/2" Deep x 12" Tall

Movement: Quartz Movement 5 1/8" Dia. Bezel

Description: Medium Level Wall Clock. Perfect for a kitchen with a grape or wine theme.

Price: \$12.00



Octagon Splendor Clock (#WW-0011)

Size: 12" Wide x 3 1/2" Deep x 12" Tall

Movement: Quartz Movement 5 1/8" Dia. Bezel

Description: Medium Level Wall Clock.

Contemporary Sister to the Whispering Wine Vineyard Clock.

Price: \$12.00

Whispering Wind Vineyard Clock & Octagon Splendor Clock Combo

Price: \$21.00

Wilckens Woodworking

TURNING SAWDUST INTO DREAMS FOR OVER 25 YEARS

follow us on facebook 



Lisa's Clock (#WW-0043)

Size: 11" Wide x 6" Deep x 19" Tall
 Movement: Quartz Movement 6 1/4" Dia. Bezel
 Description: Medium Level Wall Clock. This design has some optional turnings but can be made fretwork as well. Fragile fretwork overlay on the front.
 Price: \$14.00



Clock of the Seven Woods (#WW-0047)

Size: 11" Wide x 6" Deep x 26" Tall
 Movement: Quartz Movement & 6 1/4" Dia. Bezel
 Description: Advanced level wall clock. Plenty of leaves, vines and overlays. Winner of the 1995 Klockit "Best Wall Clock Award"
 Price: \$17.00



Majestic Forest Clock (#WW-0051)

Size: 19" Wide x 12" Deep x 52" Tall
 Movement: Quartz Movement & 6 7/8" Dia. Bezel
 Description: Advanced level Floor Clock. Traditional style fretwork with plenty of leaves, vines and swirls.
 Price: \$23.00

Contemporary Elegance Clock (#WW-0052)

Size: 19" Wide x 12" Deep x 52" Tall
 Movement: Quartz Movement & 6 7/8" Dia. Bezel
 Description: Advanced level Floor Clock. Conventional fretwork with plenty of circles, lines and arcs.
 Price: \$23.00

**Majestic Forest Clock
 Contemporary Elegance Clock
 Combo**

Price: \$40.00

Wilckens Woodworking

TURNING SAWDUST INTO DREAMS FOR OVER 25 YEARS

follow us on facebook 



Grover Irish Clock (#WW-0097)

Size: 11" Wide x 4 1/2" Deep x 30" Tall
 Movement: Quartz Movement and 6 1/4" Dia. Bezel

Description: Medium level Wall Clock with delicate fretwork. One of our more popular patterns. This one was designed for our friend Grover Irish.
 Price: \$18.00



Scott's Long Hex Clock (#WW-0110)

Size: 10 1/2" Wide x 4 1/4" Deep x 17 1/2" Tall
 Movement: Quartz Movement & 6 1/4" Dia. Bezel

Description: Medium/Difficult Level Wall Clock. Leaves, vines and overlays that will compliment your scrolling skills.
 Price: \$16.00



Mike Burch Clock (#WW-0100)

Size: 20" Wide x 12" Deep x 42" Tall
 Movement: Quartz Movement & 6 1/4" Dia. Bezel

Description: Medium Level Floor Clock with a unique design. It is designed for either dual pendulums (Klockit #20071) or a dual Cherub music turn table. This is a backlit design.
 Price: \$22.00



Charlie Sloan Clock (#WW-0132)

Size: 20" Wide x 10" Deep x 32" Tall
 Movement: Quartz Movement & 6 1/4" Dia. Bezel

Description: Advanced level Clock that has stairwells for figurines and 2 small baskets on the Head section level. Designed for our friend Charlie Sloan.
 Price: \$20.00

Wilckens Woodworking

TURNING SAWDUST INTO DREAMS FOR OVER 25 YEARS

follow us on facebook 



Anjoorian Clock (#WW-0162)

Size: 24" Wide x 12" Deep x 35" Tall
 Movement: Quartz Movement, Face included on pattern
 Description: Advanced level clock with overlays, stairways, balconies and brackets.
 Price: \$25.00

Anjoorian Shelf (#WW-0164)

Size: 15" Wide x 6 3/8" Deep x 15" Tall
 Description: Advanced level shelf that shares the fretwork from the Anjoorian Clock.
 Price: \$8.00

Anjoorian Clock Anjoorian Shelf Combo

Price: \$40.00



Tower of Time Clock (#WW-0167)

Size: 48" Wide x 31" Deep x 114" (9' 6") Tall
 Movement: Quartz Movement w/ 28" Pendulum, Weather Instruments, Music Movements, Face provided in pattern
 Description: Very Large Clock with hours and hours of great scroll saw work. There are an unlimited number of secondary items that can be made from this pattern also such as boxes, smaller clocks and shelf brackets...let your imagination run wild! Thirty Four 22" x 34" pages of patterns with assembly instructions.

Price (please specify which method when ordering) :

- \$40 - Email w/ .pdf files or
- \$50 - Mail flashdrive containing .pdf files or
- \$125 - Mail hard copies of the pattern

Wilckens Woodworking

TURNING SAWDUST INTO DREAMS FOR OVER 25 YEARS

follow us on facebook 



Delucca Clock (#WW-0227)
 Size: 4 3/4" Deep x 9 3/4" Wide x 18 1/2" Tall
 Movement: Quartz Movement and WW 173-8
 or 4 3/4" Bezel or Insert
 Description: Medium level Wall Clock with
 delicate fretwork. Designed to celebrate
 Anthony and Freda Deluca's 50th Wedding
 Anniversary.
 Price: \$13.00



Wesley Clock (#WW-0224)
 Size: 14" Wide x 7" Deep x 29 1/2" Tall
 Movement: Quartz Movement & #WW175-8
 Face
 Description: Medium Level Clock with a wall
 design and a Mantle design. Wall Clock
 includes two of small boxes.
 Price: \$20.00



Mustard & Grape Jelly Clock (#WW-0215)
 Size: 26 1/2" Wide x 18 1/2" Deep x 33 1/2"
 Tall
 Movement: 4 1/2" or smaller Bezel or #WW
 173-4 Face and Quartz Movement or Clock
 Insert.
 Description: A little more challenging Clock
 that is made up of 4 boxes that are projects by
 themselves also several brackets.
 Price: \$25.00



Montana Ridge Clock (#WW-0237)
 Size: 24" Wide x 11 3/8" Deep x 52" Tall
 Movement: 7 7/8" or 8" Bezel & Quartz
 Movement
 Description: This is a large clock that is
 advanced. Detailed fretwork with several
 contrasting overlays.
 Price: \$35.00

Wilckens Woodworking

TURNING SAWDUST INTO DREAMS FOR OVER 25 YEARS

follow us on facebook 



Laraway Clock (#WW-0240)

Size: 13 1/2" Wide x 6 1/2" Deep x 26 1/2" Tall

Movement: Quartz Movement & 6 7/8" Dia. Bezel

Description: Medium Level Mantle Clock that is a very unique design. This has been a popular pattern for several years.

Price: \$15.00



Marcelline Clock (#WW-0258)

Size: 12" Wide x 6" Deep x 35" Tall

Movement: 8" or smaller Bezel & Quartz Movement

Description: Medium level clock that would be great looking over your mantle with a Traditional look.

Price: \$20.00



Morningside Grandmother Clock (#WW-0250)

Size: 25" Wide x 16" Deep x 76" Tall

Movement: 9 1/2" - 9 13/16" Bezel & Quartz Movement

Description: Over Six Foot tall Grandmother Style Clock with independent pendulum. All pieces can be cut on a 20" Scroll Saw.

Price: \$45.00

Wilckens Woodworking

TURNING SAWDUST INTO DREAMS FOR OVER 25 YEARS

follow us on facebook 

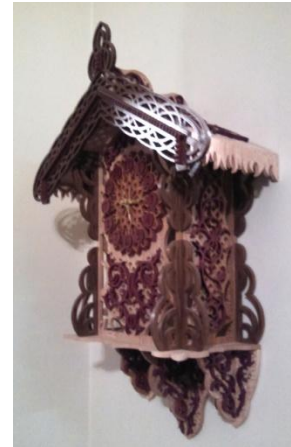


Guimond Clock (#WW-0259)

Size: 12 3/4" Wide x 7 3/4" Deep x 34" Tall
 Movement: Square Arch Dial & Quartz Movement

Description: This is medium level wall clock with a full glass door. This one is named after our Great Friend Bill Guimond.

Price: \$22.00



Jim Pyle Clock (#WW-0394)

Size: 16 3/4" Wide x 7" Deep x 24 3/4" Tall
 Movement: 6 3/4" Dia. Large Insert
 Description: Medium/Difficult Level Wall Clock.

A lattice style design with vine overlays.

Designed for our friend Jim Pyle.

Price: \$16.00



Azure Clock (#WW-0278)

Size: 12 3/4" Wide x 8 5/8" Deep x 24" Tall
 Movement: 6 1/4" Bezel & Quartz Movement with 9" Pendulum

Description: Clock that has been popular with Intarsia Craftsmen wanting to do a clock

Price: \$16.00



Roscoe Clock (#WW-0395)

Size: 15 1/2" Wide x 4 1/2" Deep x 30" Tall
 Movement: Quartz Movement & 6 1/4" Dia. Bezel

Description: Unique Advanced level clock with a swivel face. This clock was designed to honor Tammy's Grandfather.

Price: \$15.00

Wilckens Woodworking

TURNING SAWDUST INTO DREAMS FOR OVER 25 YEARS

follow us on facebook 



Fretwork Hex Clock (#WW-0405)

Size: 10" Hex x 25 1/2" Tall

Movement: 7 7/8" or 8" Bezel & Quartz Movement

Movement: Quartz Movement (Comes with WW-0174-1 Face)

Description: This is a hexagon shaped clock that has a back lighting option. Medium Level. Looks good sitting on the Fretwork Pedestal (#WW-0396).

Price: \$18.00

Fretwork Pedestal (#WW-0396)

Size: 16 1/2" Hex x 27 3/4" Tall

Description: This is a hexagon shaped table with a glass top and back lighting option. Difficult level but worth the effort. Looks good with the Fretwork Hex Clock (#WW-0405) sitting on it.

Price: \$30.00

Fretwork Hex Clock & Fretwork Pedestal Combo

Price: \$45.00



The Bechthold Clock (#WW-0411)

Size: 19 3/4" Wide x 12 1/4" Deep x 39 3/4" Tall

Movement: Quartz Movement with no Pendulum

& 9" or smaller diameter Wooden dial or Bezel
Description: Medium Level Large clock that named after a good friend and sawyer Wayne Bechthold. Fun fretwork some large pieces and an optional portion that could be converted into a box.

Price: \$24.00



follow us on facebook 



Raymond Wilckens Memorial Base (#WW-0548)

Size: 24" Wide x 14" Deep x 12" Tall
 Description: This is a medium challenging base designed as a Memorial to Wilckens Woodworking Founder Raymond Wilckens and intended to be used as a Base for the Orleans Cathedral Clock but can be its own stand alone project.
 Price: \$25.00

Orleans Cathedral Clock (#WW-0484)

Size: 18" Wide x 8" Deep x 27 1/4" Tall
 Movement: 6 1/4" Bezel & Quartz Movement
 Description: A Challenging pattern an abundance of intricate pierced cuts. Quickly becoming the Wilckens Woodworking Flagship pattern. This was Dad's favorite!
 Price: \$30.00



Orleans Cathedral Clock & Base Combo

Price: \$50.00

Wilckens Woodworking

TURNING SAWDUST INTO DREAMS FOR OVER 25 YEARS

follow us on facebook 



The Boussem Clock (#WW-0198)

Size: 17" Wide x 8 1/2" Deep x 29 1/2" Tall
 Movement: Quarts Movement with wooden face pattern (included) or bezel
 Description: Challenging Mantle clock with delicate fretwork overlays, a Wilckens Woodworking favorite and top seller.
 Price: \$20.00



The Labruster Clock (#WW-0245)

Size: 12" Wide x 5 3/4" Deep x 20 1/4" Tall
 Movement: Quarts Movement with wooden face pattern (included) or bezel
 Description: Challenging Wall clock with pierce cuts. Looks good made from one wood or a couple of your favorites.
 Price: \$15.00



The Hellman Mantle Clock (#WW-0234)

Size: 11 1/2" Wide x 7 3/4" Deep x 22" Tall
 Movement: Quarts Movement with wooden face pattern (included) or bezel
 Description: Challenging Mantel clock with a fretwork design of overlapping squares.
 Price: \$15.00



The Minnick Clock (#WW-0239)

Size: 14 1/2" Wide x 7" Deep x 19 3/4" Tall
 Movement: Quarts Movement with wooden face pattern (included) or bezel
 Description: Medium/Challenging Mantel clock with a double floor design and swirl fretwork. The clock body is made from 3/4" wood.
 Price: \$11.00



follow us on facebook 



The Rowker Clock (#WW-0232)

Size: 13 1/2" Wide x 4 1/2" Deep x 16 3/4" Tall

Movement: Quarts Movement with wooden face pattern (included) or bezel

Description: Medium Level wall clock with a unique design and fragile fretwork. The clock movement is enclosed in a box behind the oval front.

Price: \$11.00



The Sharbono Clock (WW-0570)

Size: 26" Wide x 8" Deep x 28 1/8" Tall

Movement: Quartz Movement

Description: Challenging Level Clock but it is worth the effort! This clock has multiple levels and several different things that make it a one of a kind clock. There are 4 fountains (no real water) on this one for added effect. This pattern comes with a set of colored instructions.

Price: \$30.00



The Amstal Clock (#WW-0260)

Size: 10" Wide x 5" Deep x 24 1/2" Tall

Movement: Quarts Movement with wooden face pattern (included) or bezel

Description: A Medium Level wall clock with a unique open design and fragile fretwork.

Price: \$15.00



follow us on facebook 



The Clearly Time Clock (WW-0276)

Size: 12" Wide x 8" Deep x 19 3/4" Tall

Movement: Quartz Movement & Bezel

Description: Medium Level Clock that would be great for someone new to clock maker or the expert. It would look really good sitting on your mantel!

Price: \$25.00

The Foons' Clock (WW-0248)
 Size: 20" Wide x 12" Deep x 38 3/4" Tall
 Movement: Quartz Movement & Bezel
 Description: Difficult Level Clock that is named a good friend, Harold Foons. This is a large clock with several challenging overlays. This one comes with full assembly instructions.
 Price: \$35.00



Alphabet Clock (#WW-0508)
 Size: 4 1/2" Deep x 12 11/16" Wide x 25 3/8" Tall
 Movement: Quartz Movement & Fretwork Face (~6 1/2")
 Description: Medium difficulty wall clock with letter overlays. Perfect for gifts to family and friends as a namesake clock. Comes with one letter
 Price: \$20.00 or Full set of Letters Price: \$5.00